



PORTLAND STONE  
A U S T R A L I A  
— PRESTIGIOUS ENGLISH LIMESTONE —



PORTLAND STONE  
AUSTRALIA ARE THE  
EXCLUSIVE IMPORTERS  
OF ENGLAND'S MOST  
PRESTIGIOUS STONE,  
**PORTLAND STONE.**



It all began when Sir Christopher Wren constructed St.Paul's cathedral from Portland stone in the 1600's. It was also commissioned for Buckingham Palace, the Bank of England and the British Museum.

Contemporary architects continue to specify Portland stone for prestigious projects. It has won a total of 50 industry awards to date.

We supply stone for many applications including paving, interior and exterior cladding, tiling, feature walls and memorials. Finishes available include honed, polished, brushed and resin-fill.

Our state-of-the-art factory and in-house stonemasons sculpt intricate stonework and unique commissions to your specification.

If you require something special, a true point of difference for your project, take a look at **Portland Stone**.





## ROACH

With its unique, Portland stone fossil structure, Roach is ideal for stone cladding as a contrasting feature stone. As seen on the award winning BBC Broadcasting House.



## BASEBED

Basebed is the premium quality, fine grain Portland stone. Perfect for cladding, flooring and intricate stonework, it was used on Eric Parry's award winning 30 Finsbury Square.



## WHITBED

Whitbed is a very durable type of Portland stone with a unique fossil structure. Suitable for paving and cladding, it was used on Eric Parry's award winning New London Stock Exchange.



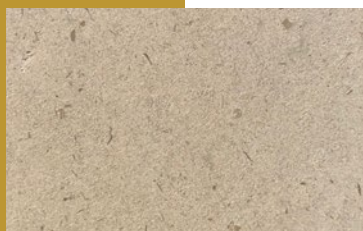
## FINISH | POLISHED

Our premium fine grained Limestone can be enhanced by polishing. It is perfect for commercial and residential use in prestigious homes, hotels and stores. *(Basebed Polished pictured)*



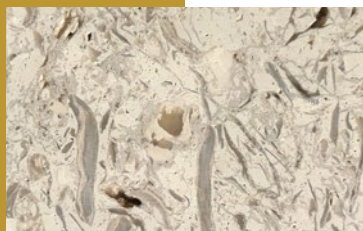
## FINISH | BRUSHED

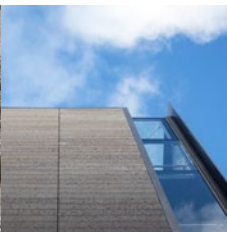
The brushing process leaves the stone with a slightly riven texture. Such a product is ideal for residential and commercial use as flooring and feature walls. *(Basebed Brushed pictured)*



## FINISH | RESIN-FILLED

Our Whitbed in its natural state contains small voids on the surface. We can fill these voids with resin when specifying for internal or external flooring. *(Whitbed Resin-Filled pictured)*





## BRITISH MUSEUM

*London, WC1*

The museum was first opened in 1769 and currently houses over 8 million exhibits. Approximately 1600m<sup>2</sup> of Portland Stone *Bowers Roach* was specified for cladding the British Museum extension.

*Roger Stirk Harbour + Partners (Architect)*



## FLANDERS FIELDS MEMORIAL GARDEN

*Australian War Memorial, Canberra, ACT*

Commemorating WW1, the garden features soil from areas of Flanders in Belgium. 14 segments of Portland Stone *Basebed* were supplied, with the lettering hand carved on site.

*Johnson Pilton Walker (Architect), Built (Contractor), Traditional Stone Restoration (Carver)*



## FLINDERS PROJECT

*Mornington Peninsula, VIC*

Portland Stone *Grove Whitbed* was specified for this beautiful house project at Flinders. Approximately 400m<sup>2</sup> was installed using the 'stone clip' system.

*Woods Bagot (Architect), Remato Constructions (Builder).*

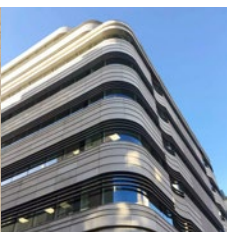


## NEW LUDGATE

*London*

New Ludgate created the opportunity to build a sustainable workplace and allowed scope for the development of new public territory. A canvas of *Jordans Basebed* in a contemporary, bold, geometric pattern was used to create it's feature wall.

*Fletcher Priest, Sauerbruch Hutton, Gustafson Porter (Architects), Putney & Wood (main Contractor)*



## ST JAMES'S MARKET

*London, SW1*

St James's is part of The Crown Estate's core West End holdings and is an architectural masterpiece at the centre of London. It's construction utilised 4,000m<sup>2</sup> of *Fancy Beach Whitbed*, 169m<sup>3</sup> of *Jordans Whitbed* and *Grove Whitbed* plinths.

*Make Architects (Architect)*



## FINSBURY CIRCUS

*London, EC2*

Situated in the heart of London's financial district, it's exterior features Portland Stone *Jordans Whitbed*, whilst the interior boasts a stunning wall of illuminated Portland *Grove Whitbed* panels. Approximately 2270m<sup>2</sup> of Portland Stone was supplied.

*Wilkinson Eyre (Architect), Lendlease (main Contractor).*



## LIGHT WEIGHT CLADDING

Our latest product, this CSIRO certified cladding is made up of a thin veneer of our stone that is bonded to a light weight aluminium backing.

Considerably lighter and faster to install, this innovative product can save both time and cost.

- 1/3 of solid stone weight
- 3x faster installation
- Weather / corrosion resistant
- Fireproof



## PORTLAND STONE SLIP TEST RESULTS | MARCH 2019

Testing according to AS 4586 -2013 Appendix A and Appendix B

PRODUCT	TEST	CLASSIFICATION ACHIEVED
Portland stone Basebed Honed	Wet pendulum	P4
Portland stone Whitbed Honed	Wet pendulum	P4
Portland stone Basebed Polished	Wet pendulum	P3
	Dry friction	D1 (score of .90)
Portland stone Whitbed resin-filled	Wet pendulum	P3
	Dry friction	D1 (score of .90)

See table below for interpretation of the results for the wet pendulum test.

The dry friction test has two possible outcomes - either 'D0' - a less slip resistant surface, or 'D1' - a greater slip resistant surface. The pass mark is >.40. Both our products tested achieved a score of .90.

LOCATION	CLASSIFICATION
<b>External pavements &amp; ramps</b>	
1. External ramps including sloping driveways, footpaths etc steeper than 1 in 14 (4.1 degrees)	P5
2. sales areas (eg markets), external car parks, colonnades, walkways, pedestrian crossings, balconies, verandas, carports, driveways, courtyards and roof decks	P4
3. Undercover car parks	P3
<b>Hotels, Offices, Public buildings, Schools &amp; Kindergartens</b>	
1. Entries and access areas including Hotels, offices, public buildings,schools, kindergartens, internal lift lobbies and common areas of public buildings	Wet Area P3 Transitional Area P2 Dry Area P1
2. Toilet facilities in offices, hotels and shopping centres	P3
3. Hotel apartment bathrooms, ensuites and toilets	P2
4. Hotel apartment kitchen and laundries	P2
<b>Supermarket &amp; Shopping Centres</b>	
1. Fast food outlets, buffet food servery areas, food courts and fast food dining areas in shopping centres	P3
2. Shop and supermarket fresh fruit and vegetable area	P3
3. Shop entry areas with external entrances	P3
4. Supermarket aisles (except fresh food areas)	P1
5. Other separate shops inside shopping centres - Wet	P3
6. Other separate shops inside shopping centres - Dry	P1
<b>Swimming Pools &amp; Sporting facilities</b>	
1. Swimming pool ramps and stairs leading to water	P5
2. Swimming pool surrounds and communal shower rooms	P4
3. Communal changing rooms	P3
4. Undercover concourse areas of sports stadiums	P3
<b>Hospitals &amp; Aged Care facilities</b>	
1. Bathrooms and ensuites in hospitals and aged care facilities	P3
2. Wards and corridors in hospitals and aged care facilities	P2

*"I was very impressed with the quality of the Portland stone you supplied for our very prestigious project at the Australian War Memorial in Canberra."*

*As you know, we ordered 4 additional pieces of the Portland stone to mitigate the risk of any stone being delivered with a defect and of course as promised every stone was perfect and the 4 additional pieces are now safely in storage at the Australian War Memorial.*

*The stone being so finely grained was a pleasure to work and letter cut into. The results are fortunately in the public arena for all to see and appreciate. We look very forward to working with you on the supply of more of this marvelous product in the near future."*

**James Ginter**

*Director Traditional Restoration Company*



1300 711 965 | [graham@portlandstone.com.au](mailto:graham@portlandstone.com.au)

**PORTLANDSTONE.COM.AU**  